

IslandReady

nationalgrid

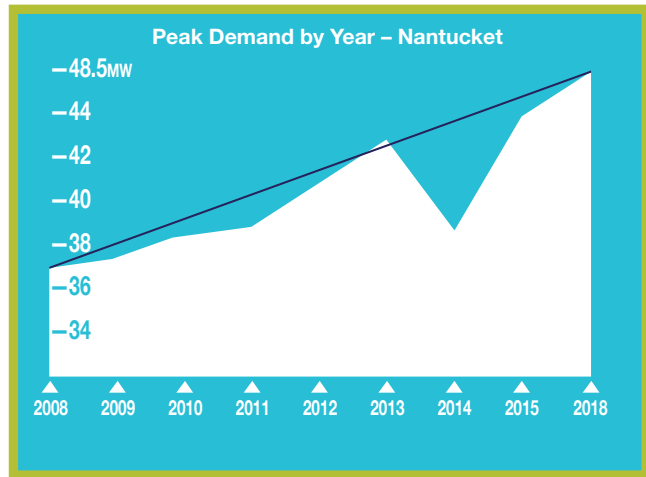
A NANTUCKET ELECTRICITY INITIATIVE

WORKING TO MEET NANTUCKET'S ELECTRICITY NEEDS

WHAT: Project Overview



Nantucket's electricity supply is currently delivered via two submarine cables that connect the Candle Street Substation to the mainland power grid on Cape Cod via Nantucket Sound. The Island also had six megawatts (MW) of diesel generation to provide some temporary power should an outage affect one of the cables. For many years, this system offered adequate electrical capacity for the island, even during peak summer months.



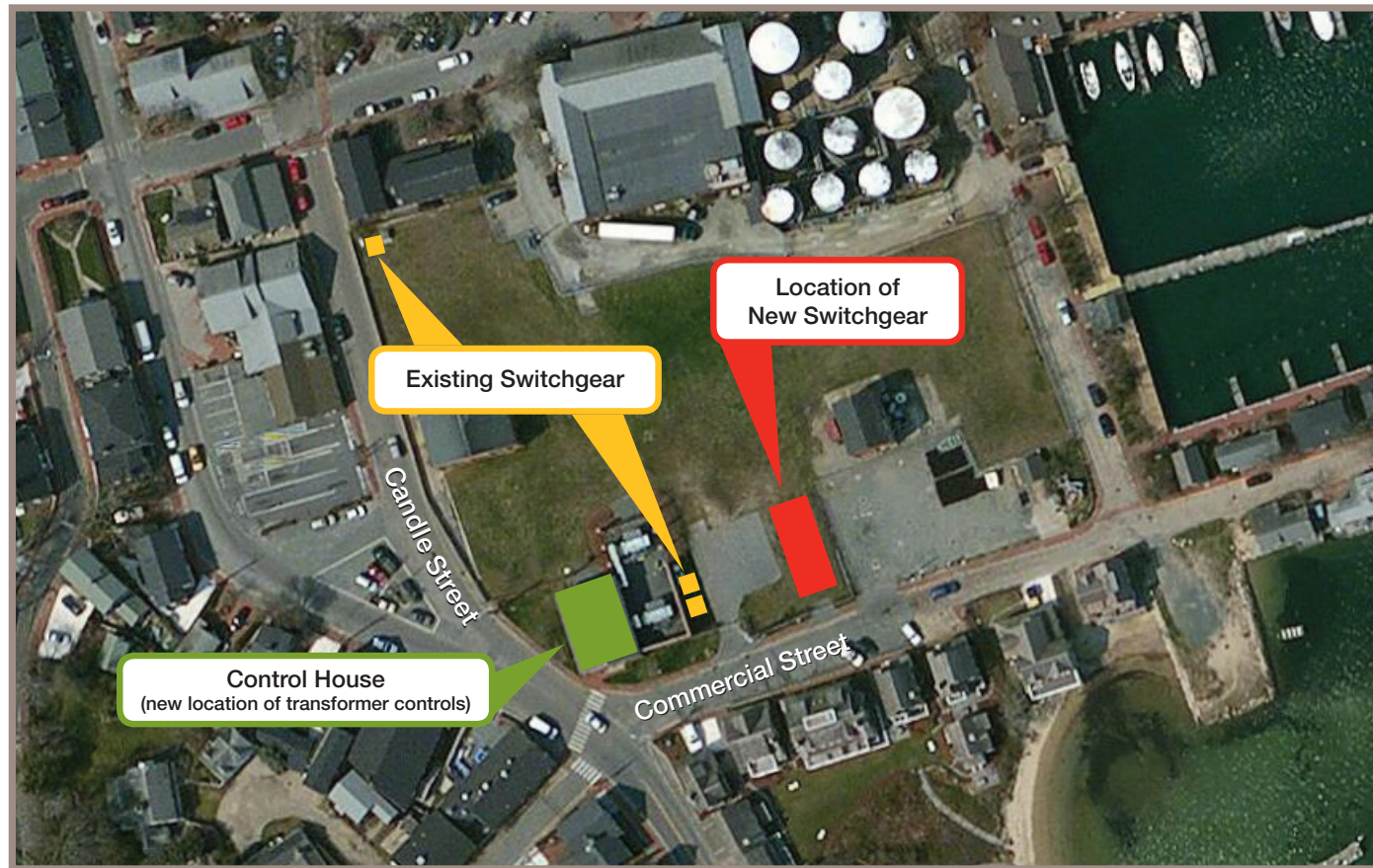
However, the demand for electricity on Nantucket, particularly during the summer season, has grown significantly in just the last 10 years. It has increased from 37MW in 2008 to nearly 49MW in 2018. The system that has served the Island for many years is no longer adequate, and National Grid forecasts that a third submarine cable will be necessary in the next 10-15 years.

WHY: Project Benefits & Solutions

To meet Nantucket's energy needs over the long term, and to defer the need for a third submarine cable for as long as is practical, National Grid has developed a holistic, integrated plan to upgrade the Island's electrical infrastructure. IslandReady: A Nantucket Electricity Initiative will enhance the reliability and resiliency of the Island's electricity system and upgrade the power supply system so it continues to serve the needs of our customers as demand continues to increase.

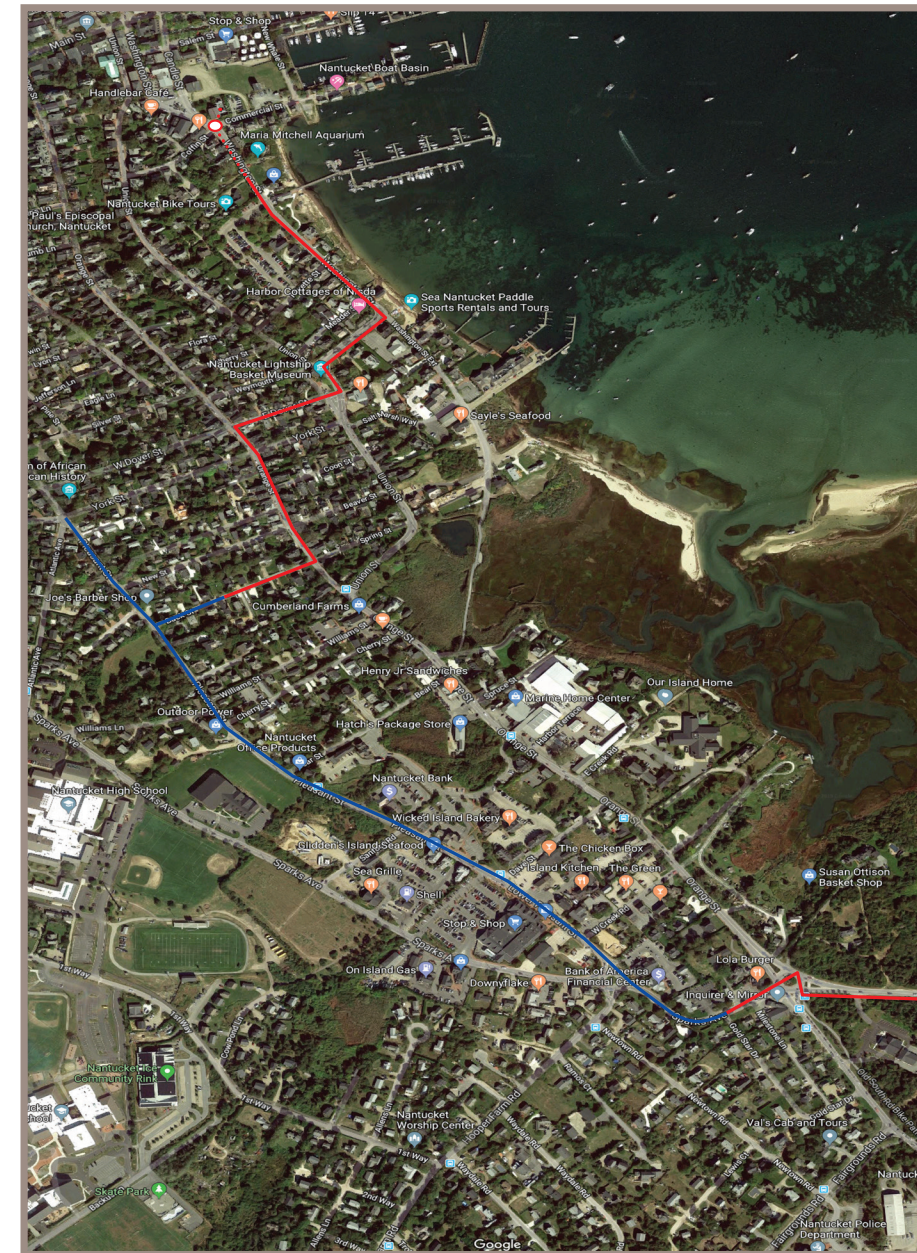


WHERE: Project Maps



Candle Street Substation Upgrades

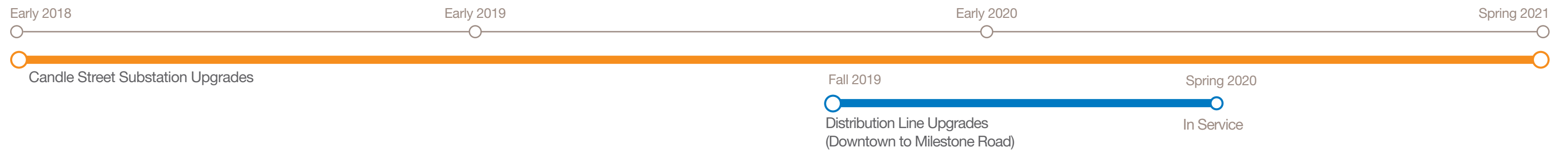
- Transformer controls have been relocated from the sides of the existing transformers to inside the control house (brick building) on the property to provide protection from potential flood waters
- Three existing switchgear boxes housed at the substation, along with a new (fourth) switchgear box, will be relocated within the property and placed on a newly constructed platform to provide increased reliability and safety



Distribution Line Upgrades

Installation of a new L8 Feeder will create increased capacity for the east side of Nantucket (Milestone Road area), improve switching ability on the Island's distribution network, and reduce the potential for outages on other feeders, which serve critical facilities on Nantucket (e.g. hospital, airport, and wastewater treatment facility).

WHEN:



WHERE: Bunker Road Site



Diesel Generator

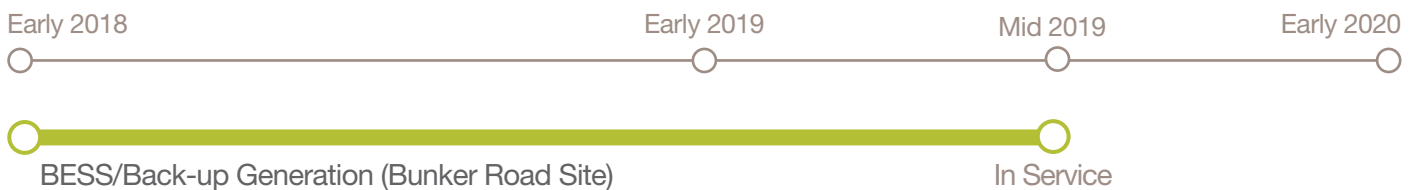


Battery Energy Storage System

Battery Storage and Back-Up Generation

- A new battery energy storage system (BESS) with a capacity of 48-megawatt hours (MWh) has been installed, which means it can provide the Island with 6 megawatts of capacity for up to eight hours
- A new 10MW diesel-powered generator has replaced two aging 3MW generators

WHEN*



WHO: Contact the IslandReady Team

☎ 508.257.5135 or 888.713.8448

📍 islandreadynantucket.com

✉ info@islandreadynantucket.com

🐦 @IslandReadyMA

nationalgrid

